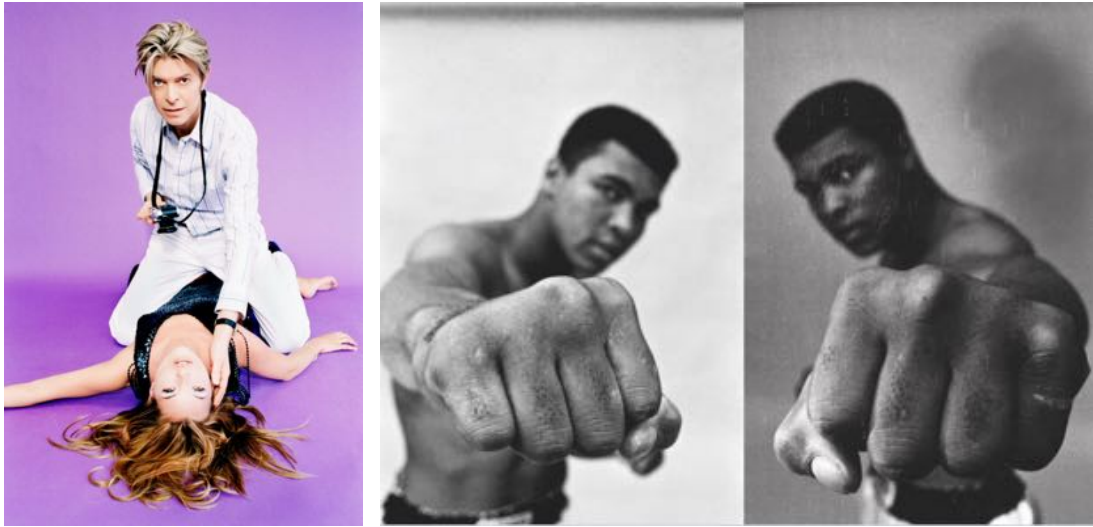


# PHOTO LONDON

**PHOTO LONDON 2016**  
**Somerset House and across London**  
**19-22 May 2016**



(L-R) **David Bowie and Kate Moss** by Ellen von Unwerth, 2005 (Camera Work); **Ali Left & Right Fist** by Thomas Hoepker, 1966 (Bildhalle)

Photo London, the major international photography fair, will return to the capital in May 2016 with a city-wide programme of exhibitions and events. Over 80 of the world's leading galleries will showcase photographs for sale at Somerset House, with work by some of the most important photographers going on display alongside new and emerging talent.

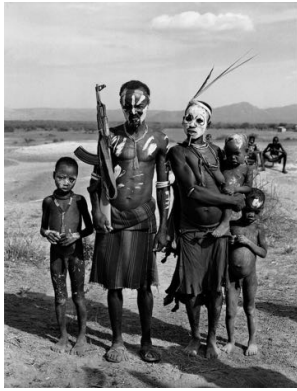
The photography on show will span a range of genres, from fine art and fashion to documentary and advertising, with highlights including rare original prints by the 19<sup>th</sup> century pioneer William Henry Fox Talbot, Yousuf Karsh's renowned portrait of Winston Churchill, Erwin Blumenfeld's *Vogue* cover image, and more recent work by Patrick Demarchelier, Bob Carlos Clarke and Thomas Struth amongst many others. A hand-picked selection of London's top galleries will be exhibiting work alongside galleries from Berlin, Cologne, Helsinki, Lisbon, Zurich, Tehran, Minneapolis, New York, Santa Monica, Singapore and Tokyo. This year, there will be an extended section dedicated to new galleries.

Three major exhibitions will also open at Somerset House as part of Photo London, including a large survey show of work by acclaimed photojournalist Don McCullin, who is this year's Master of Photography; an exhibition of new work by contemporary Russian photographer Sergei Chilikov, presented by The Multimedia Art Museum Moscow; and a show of work by Turner Prize-nominated artist Craigie Horsfield, curated by the Wilson Centre of Photography.

A stellar line-up of top international photographers will participate in Photo London's public programme both on site at Somerset House and off site in locations across London, including Whitechapel Gallery, the National Portrait Gallery, the Photographers' Gallery and Hayward Gallery.

The events programme at Somerset House is curated by William Ewing, distinguished curator and writer on photography, former Director of Musée de l'Elysée and Director of Exhibitions at the International Center of Photography in New York. A highlight of the programme will be a rare opportunity to hear Don McCullin in conversation with Tate's photography curator Simon Baker on Thursday 19 May. Other participating photographers include Miles Aldridge, Ed Burtynsky, Katy Grannan, Francis Hodgson, Nadav Kander, Nick

Knight, David Maisel, Gerard Malanga, Don McCullin, Mary McCartney, Richard Misrach, Graham Nash, Hans-Ulrich Obrist, Martin Parr and Olga Sviblova.



**African Family with Gun**, Karo Tribe, Ethiopia by Don McCullin, c. 2003 ©Don McCullin; **Russian Province** by Sergei Chilikov, 1995 © Sergei Chilikov; **Carol X** by Craigie Horsfield, 2015 © Craigie Horsfield

London's public museums and galleries will put the spotlight on photography in May, including *Strange and Familiar: Britain as Revealed by International Photographers* curated by Martin Parr, at the Barbican Art Gallery; *Vogue 100: A Century of Style* at the National Portrait Gallery; work by William Henry Fox Talbot at the Science Museum/Media Space; the V&A will present *Paul Strand: Photography and Film for the 20th Century* and *A History of Photography*; Tate Modern will present *Performing for the Camera* as well as host *Offprint London – A Photobook Fair*; Tate Britain will present *Painting with Light: Art and Photography from the Pre-Raphaelites to the Modern Age*; the Photographers' Gallery will present *Deutsche Börse Foundation Photography Prize 2016* and *Take Two: Drawing and Photography*; and Camden Arts Centre will feature the work of Stefan and Franciszka Themerson.

Sotheby's, Christies and Phillips will all hold major photography sales during Photo London week.

Photo London is sponsored by the Geneva-based Pictet Group, one of Europe's leading asset and wealth management organisations.

### **Photo London 2016**

**19 – 22 May 2016**

Somerset House, Strand, London WC2r 1LA

[www.photolondon.org](http://www.photolondon.org)

#### **Media Enquiries:**

Jane Quinn/Dennis Chang, Bolton & Quinn

T: +44 (0) 20 7221 5000

E: [jq@boltonquinn.com](mailto:jq@boltonquinn.com) or [dennis@boltonquinn.com](mailto:dennis@boltonquinn.com)

#### **Notes to Editors:**

Photo London's public programme is supported by the LUMA Foundation. The Financial Times Weekend is the global media partner. Photo London is a Candlestar production.

### **About Photo London**

Photo London was created to give London an international photography event befitting the city's status as a global cultural capital. Founded in 2015, it has already established itself as a world-class photography fair and as a catalyst for London's dynamic photography community. From the capital's major museums to its auction houses, galleries large and small, right into the burgeoning creative community in the East End and South London, Photo London harnesses the city's outstanding creative talent and brings the world's leading photographers, curators, exhibitors and dealers together with the public to celebrate photography, the medium of our time.

### **About Pictet Group**

The **Pictet Group** is one of Europe's leading asset and wealth management groups. Founded in Geneva in 1805, Pictet has a presence in 25 financial centres worldwide. Sustainability, both as an

investment expertise and as a guiding principle of business management, lies at the heart of Pictet's concerns. The Pictet Group is owned by seven managing partners and 34 equity partners.

### **About The LUMA Foundation**

The **LUMA Foundation** was established in 2004 by Maja Hoffmann to support the activities of independent artists and pioneers, as well as institutions working in the fields of art and photography, publishing, documentary, and multimedia. The foundation specialises in challenging artistic projects combining a particular interest in environmental issues, human rights, education, and culture in the broadest sense. The LUMA Foundation and LUMA Arles, the executive entity founded in 2014 in support of the project in Arles, are currently developing an experimental cultural centre in the Parc des Ateliers in the city of Arles, France, working with a group of artistic advisors and the architects Frank Gehry and Annabelle Selldorf. This ambitious project envisions an interdisciplinary centre dedicated to the production of exhibitions and ideas, research, education and archives and is supported by a growing number of public and private partnerships. The LUMA Foundation has also supported the International Photography Festival Les Rencontres d'Arles since 2002, in particular the Discovery Award.

### **About Somerset House**

A unique part of the London cultural scene, Somerset House is an historic building where surprising and original work comes to life.

From its 18th century origins, Somerset House has been a centre for debate and discussion – an intellectual powerhouse for the nation. Somerset House is today a key cultural destination in London in which to experience a broad range of artistic activity, engage with artists, designers and makers and be a part of a major creative forum – an environment that is relaxed, welcoming to all and inspirational to visit while providing a stimulating workplace for the cultural and creative industries.

Since its opening in 2000, Somerset House has built up a distinctive outdoor public programme including Skate, concerts, an open-air film season and a diverse range of temporary exhibitions throughout the site focusing on contemporary culture, with an extensive learning programme attached.

We are now home to the biggest community of creative organisations in central London including the The Courtauld Gallery and Institute of Art, King's College London Cultural Institute and over 100 other creative businesses. We currently attract approximately 2.5 million visitors every year.

FT Weekend

**LUMA**  
FOUNDATION

 PICTET

Candlestar 

AT  
SOMERSET  
HOUSE